



# Arfaptin 1 Polyclonal Antibody

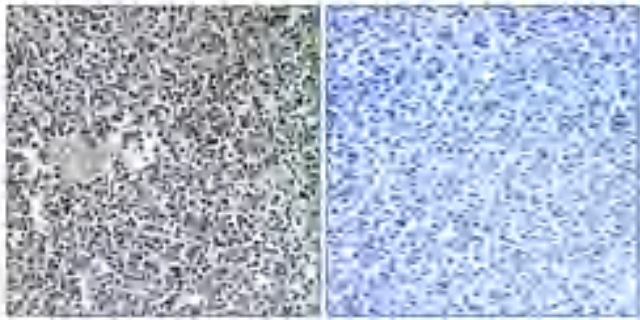
<b>Catalog No</b>	YP-Ab-00675
<b>Isotype</b>	IgG
<b>Reactivity</b>	Human;Mouse;Rat
<b>Applications</b>	WB;IHC;IF;ELISA
<b>Gene Name</b>	ARFIP1
<b>Protein Name</b>	Arfaptin-1
<b>Immunogen</b>	The antiserum was produced against synthesized peptide derived from human ARFIP1. AA range:271-320
<b>Specificity</b>	Arfaptin 1 Polyclonal Antibody detects endogenous levels of Arfaptin 1 protein.
<b>Formulation</b>	Liquid in PBS containing 50% glycerol, 0.5% BSA and 0.02% sodium azide.
<b>Source</b>	Polyclonal, Rabbit,IgG
<b>Purification</b>	The antibody was affinity-purified from rabbit antiserum by affinity-chromatography using epitope-specific immunogen.
<b>Dilution</b>	Western Blot: 1/500 - 1/2000. Immunohistochemistry: 1/100 - 1/300. Immunofluorescence: 1/200 - 1/1000. ELISA: 1/40000. Not yet tested in other applications.
<b>Concentration</b>	1 mg/ml
<b>Purity</b>	≥90%
<b>Storage Stability</b>	-20°C/1 year
<b>Synonyms</b>	ARFIP1; Arfaptin-1; ADP-ribosylation factor-interacting protein 1
<b>Observed Band</b>	40kD
<b>Cell Pathway</b>	Golgi apparatus . Golgi apparatus, trans-Golgi network membrane .
<b>Tissue Specificity</b>	Ubiquitously expressed (PubMed:9038142). Higher levels in liver, pancreas, placenta, skeletal muscle and heart (PubMed:9038142).
<b>Function</b>	function:Putative target protein of ADP-ribosylation factor.,similarity:Contains 1 AH domain.,subunit:Interacts with non-myristoylated GTP-bound ARF3, but not to GDP-bound ARF3, and also to ARF1. Binds with lower affinity to ARF5 and with very little affinity to ARF6.,tissue specificity:Ubiquitously expressed. Higher levels in liver, pancreas, placenta, skeletal muscle and heart.,
<b>Background</b>	function:Putative target protein of ADP-ribosylation factor.,similarity:Contains 1 AH domain.,subunit:Interacts with non-myristoylated GTP-bound ARF3, but not to GDP-bound ARF3, and also to ARF1. Binds with lower affinity to ARF5 and with very little affinity to ARF6.,tissue specificity:Ubiquitously expressed. Higher levels in liver, pancreas, placenta, skeletal muscle and heart.,
<b>matters needing attention</b>	Avoid repeated freezing and thawing!



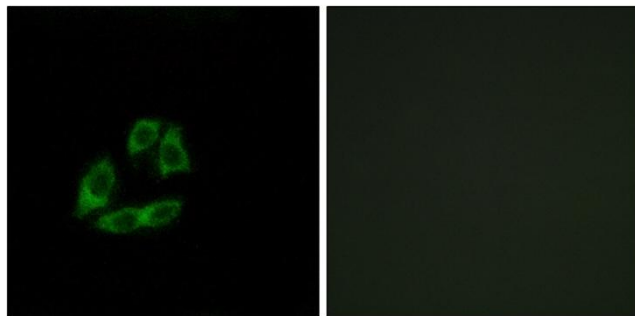
**Usage suggestions**

This product can be used in immunological reaction related experiments. For more information, please consult technical personnel.

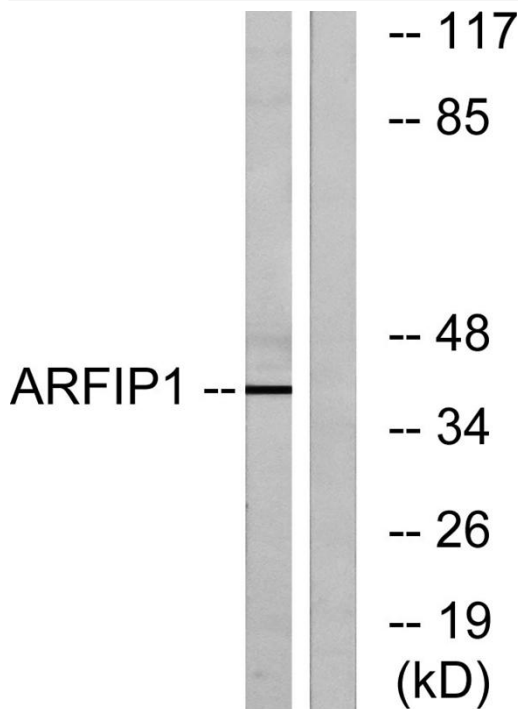
**Products Images**



Immunohistochemical analysis of paraffin-embedded Human thymus gland. Antibody was diluted at 1:100(4° overnight). High-pressure and temperature Tris-EDTA,pH8.0 was used for antigen retrieval. Negative contrl (right) obtaned from antibody was pre-absorbed by immunogen peptide.



Immunofluorescence analysis of A549 cells, using ARFIP1 Antibody. The picture on the right is blocked with the synthesized peptide.



Western blot analysis of lysates from Jurkat cells, using ARFIP1 Antibody. The lane on the right is blocked with the synthesized peptide.